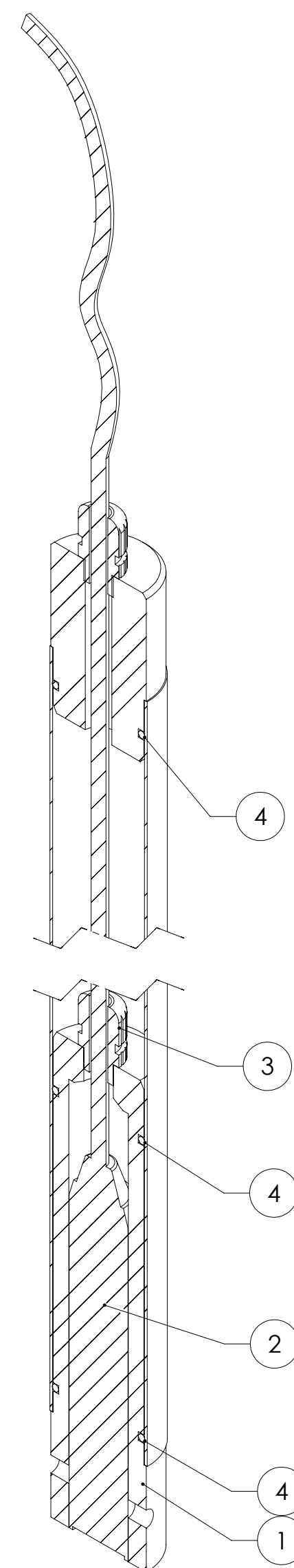
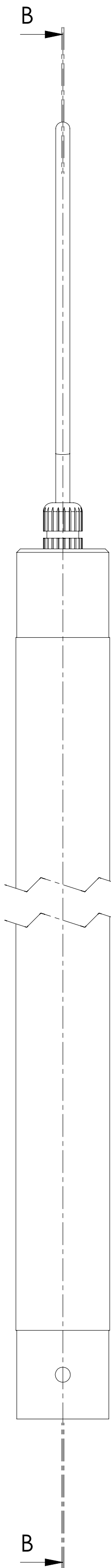
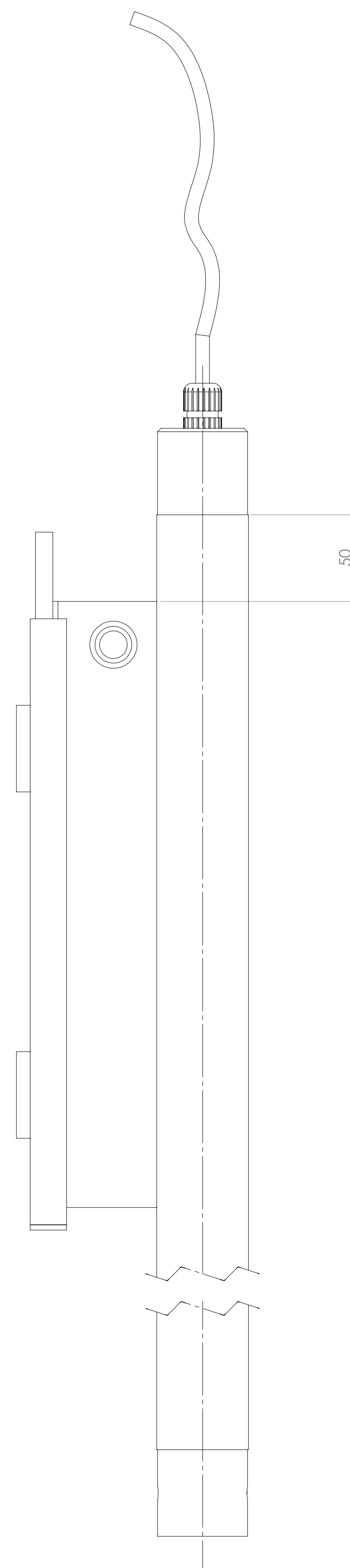
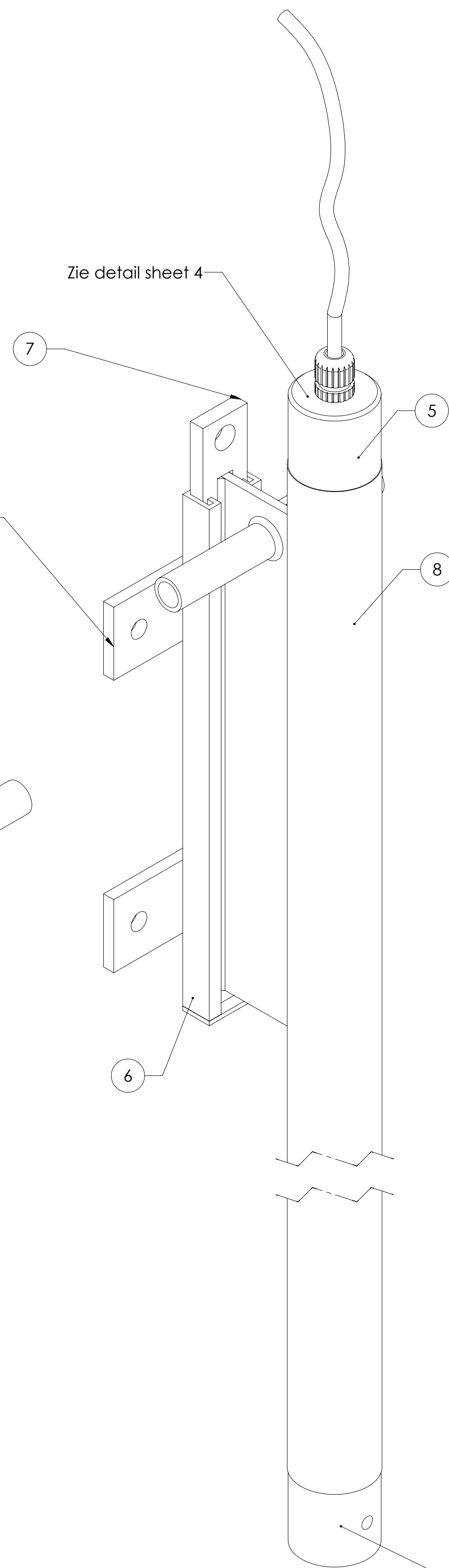
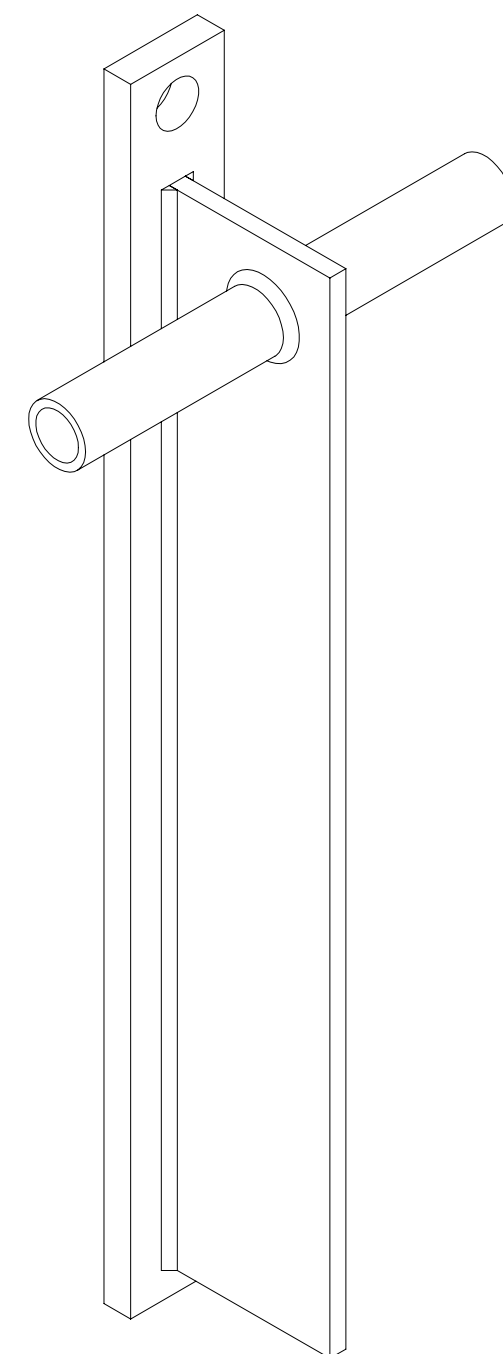
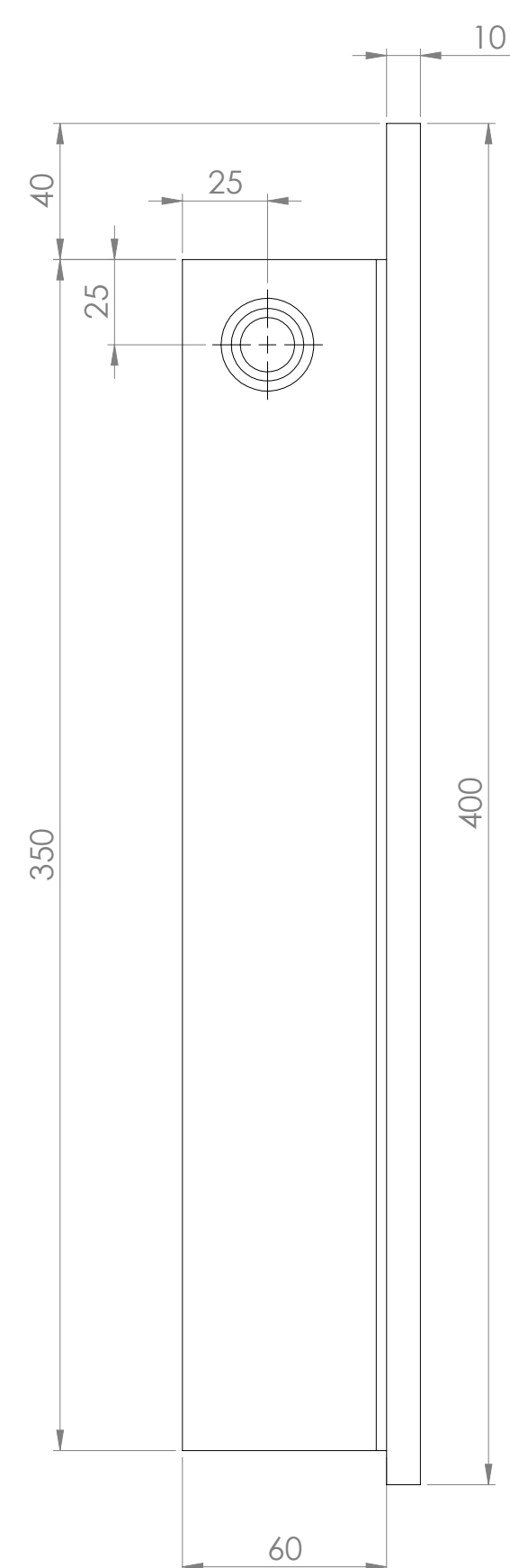
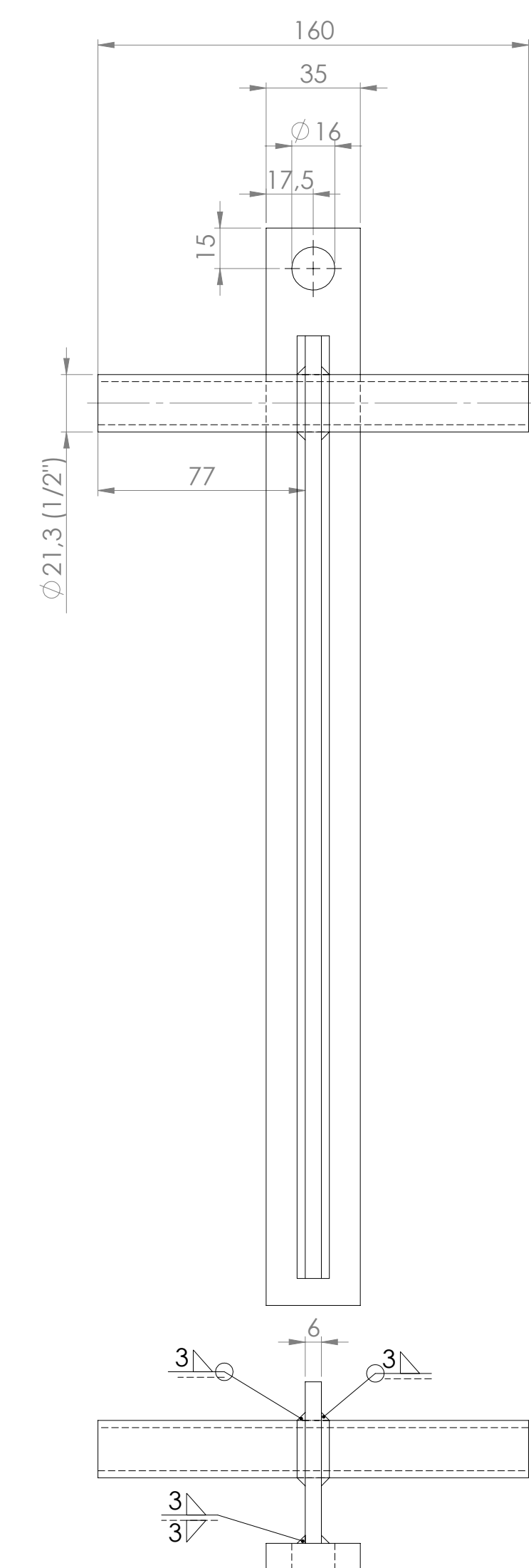
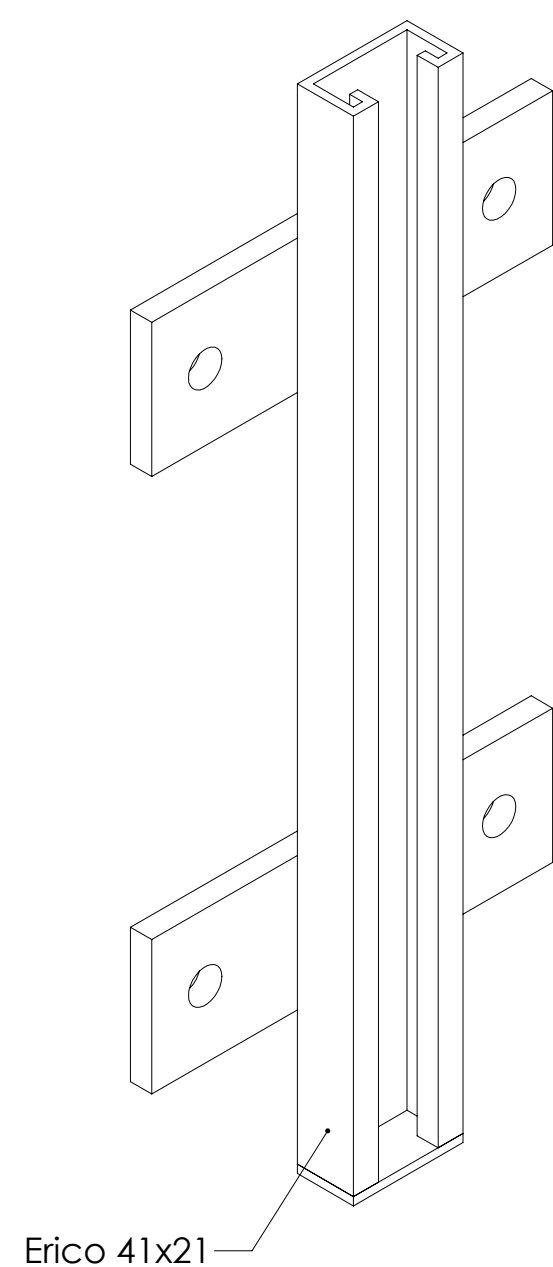


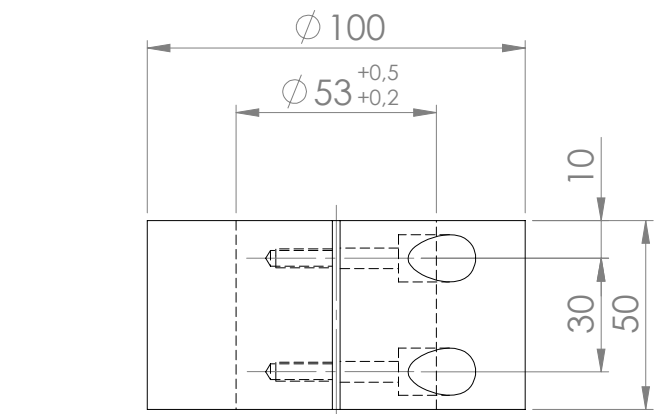
algemene ruwheid volgens		NEN 3634	toleranties tenzij anders vermeld		NEN-ISO 1101			
R _a in MICRON (µm)	▽	▽	maat ±	hoek ± °	A	A		
materiaal			gewicht	gr				
opp. behandeling			warmte behandeling					
benaming		amerikaanse proj.		schaal				
Niveau meting Uitvoering type "A"				1:2				
				MM				
WATERSCHAP REGGE EN DINKEL WEGTERSWEG 17 7556 BP HENGEL (074) 246 92 22		projectnummer		tekeningsnummer				
				009-000				
get datum		GDM 15-01-09		get blad		1 van 5		formaat A1



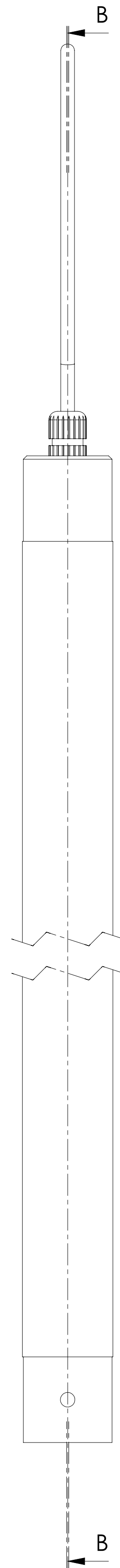
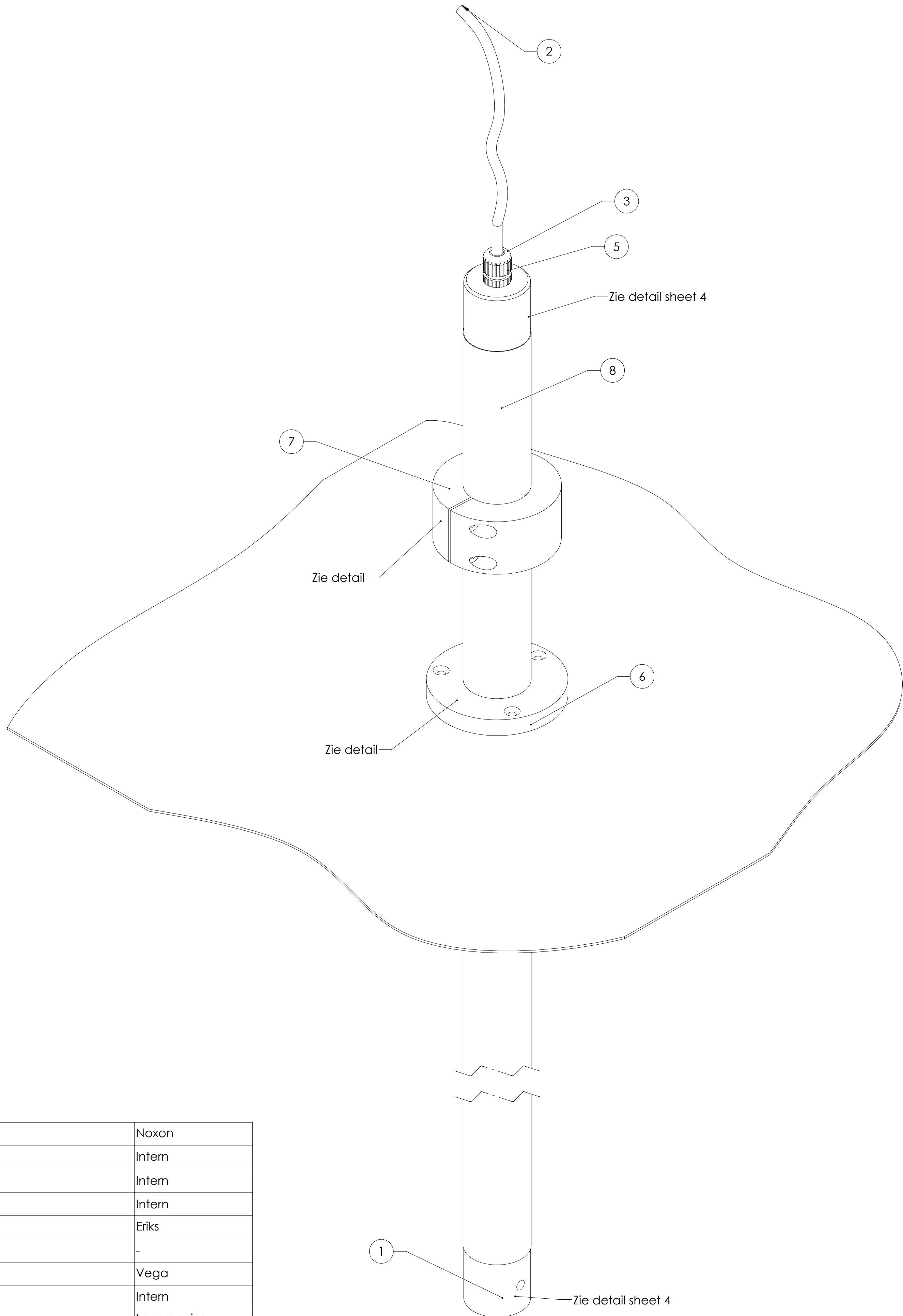
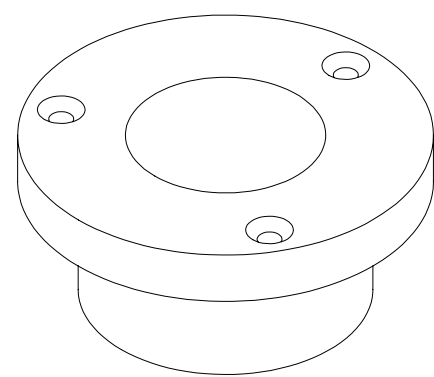
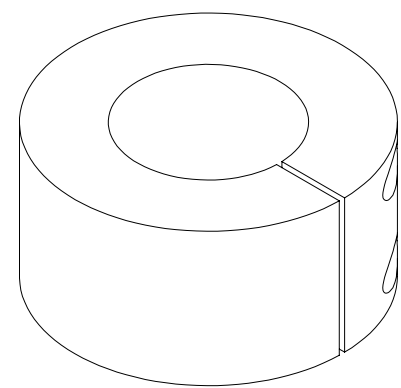
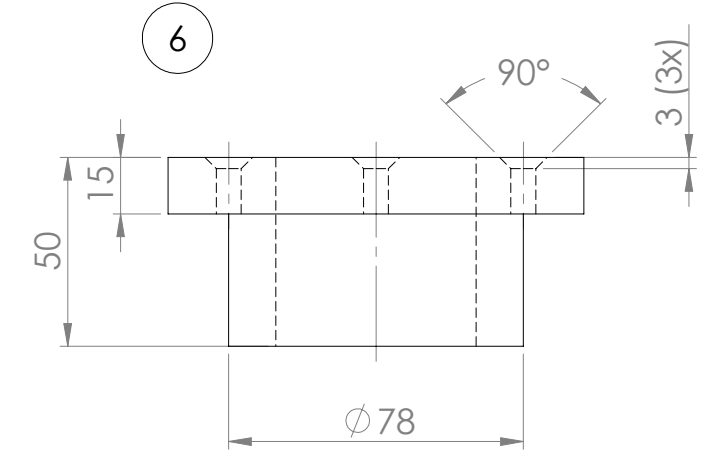
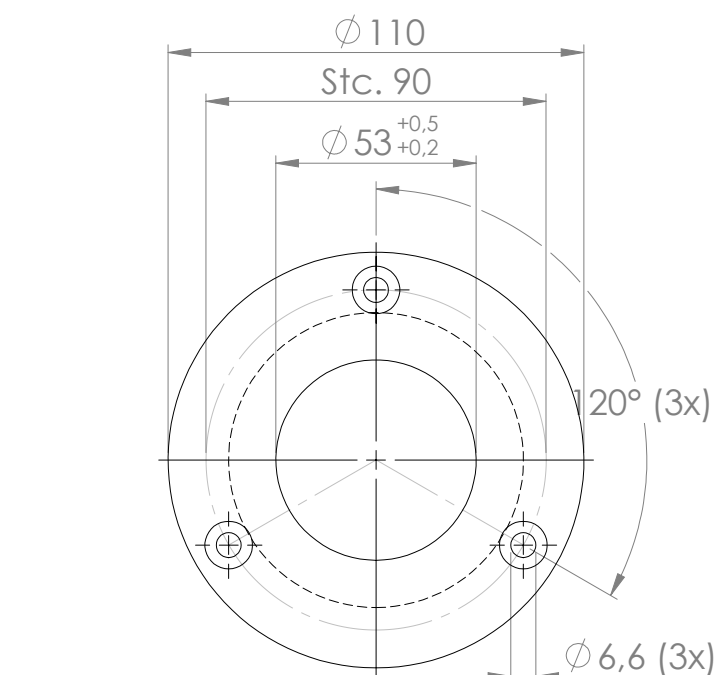
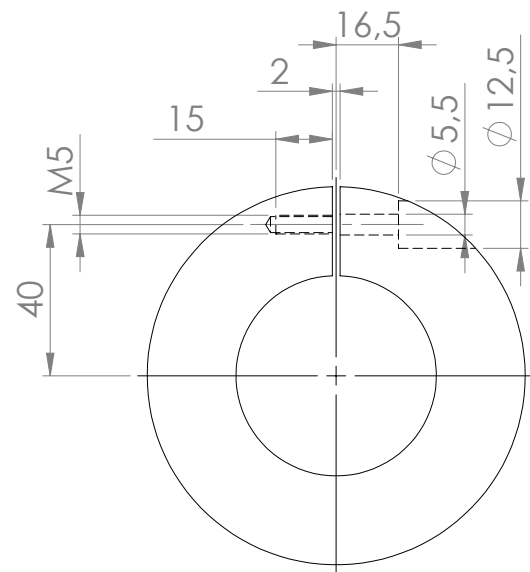
SECTION B-B
SCALE 1 : 2

8	Buis	1	53 x 1.5 Lengte op maat	Rvs 304L	Noxon
7	Geleidingsplaat	1	Zie detail	Rvs 304 L	Intern
6	Bevestigingsframe	1	Zie detail	Rvs 304 L	Erico
5	Bus	1	52 x80	PTFE	Intern
4	O-ring	3	Inw. 40 x 4	NBR	Eriks
3	Wartel	2	M16	Kunststof	-
2	Pressure Trasmitter	1	Waterpilot FMX167	Rvs	Vega
1	Kunststofbus / Vega uitvoering	1	Zie sheet 4	Delrin	Intern
Pos.No	Onderdeel / Tek.No	Aantal	Afmeting / Type	Materiaal	Leverancier

[illegible]



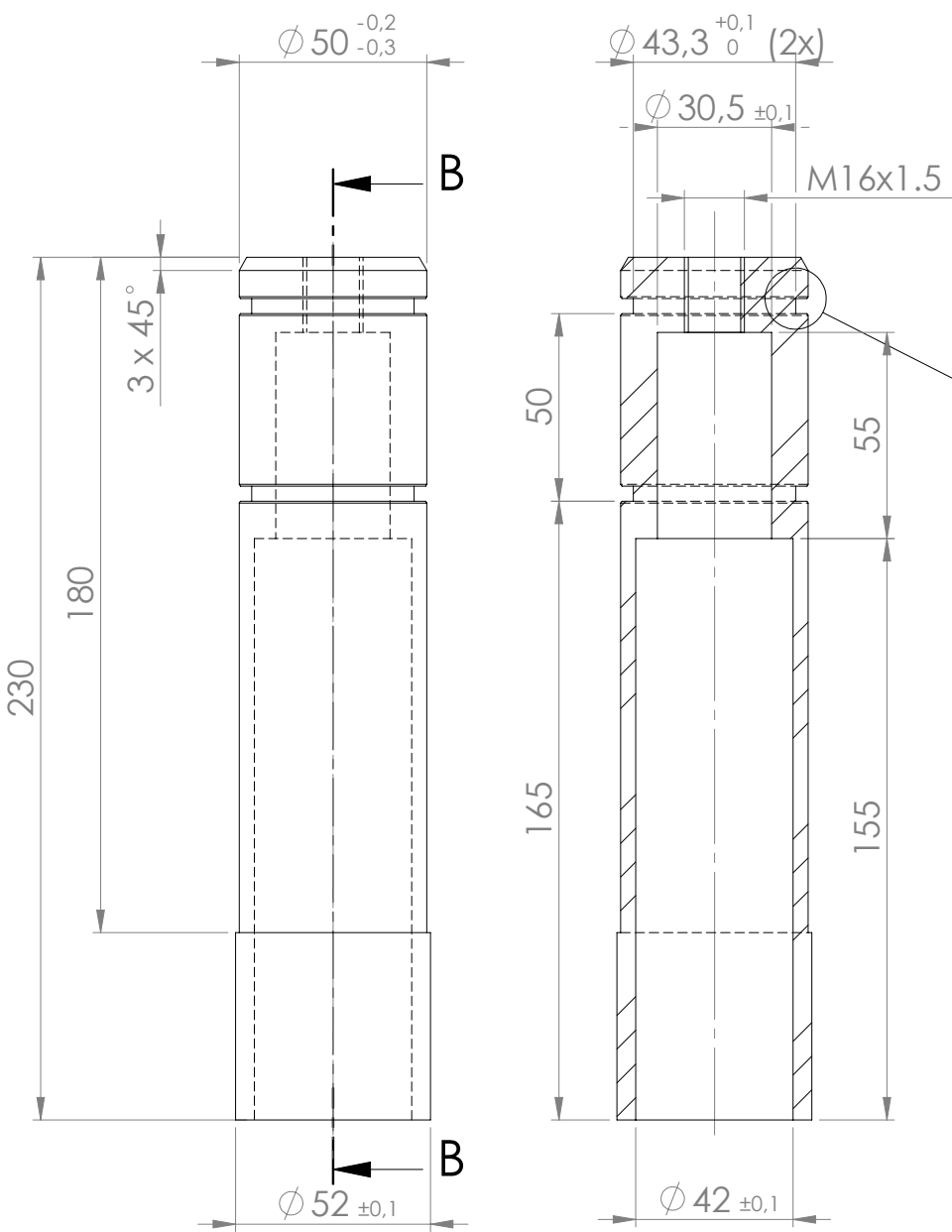
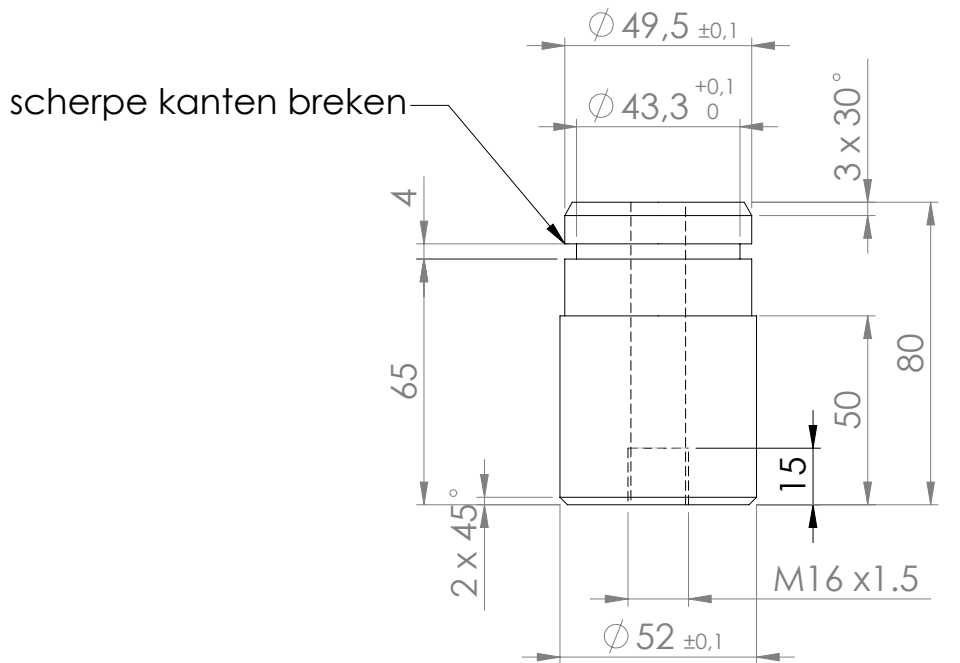
7



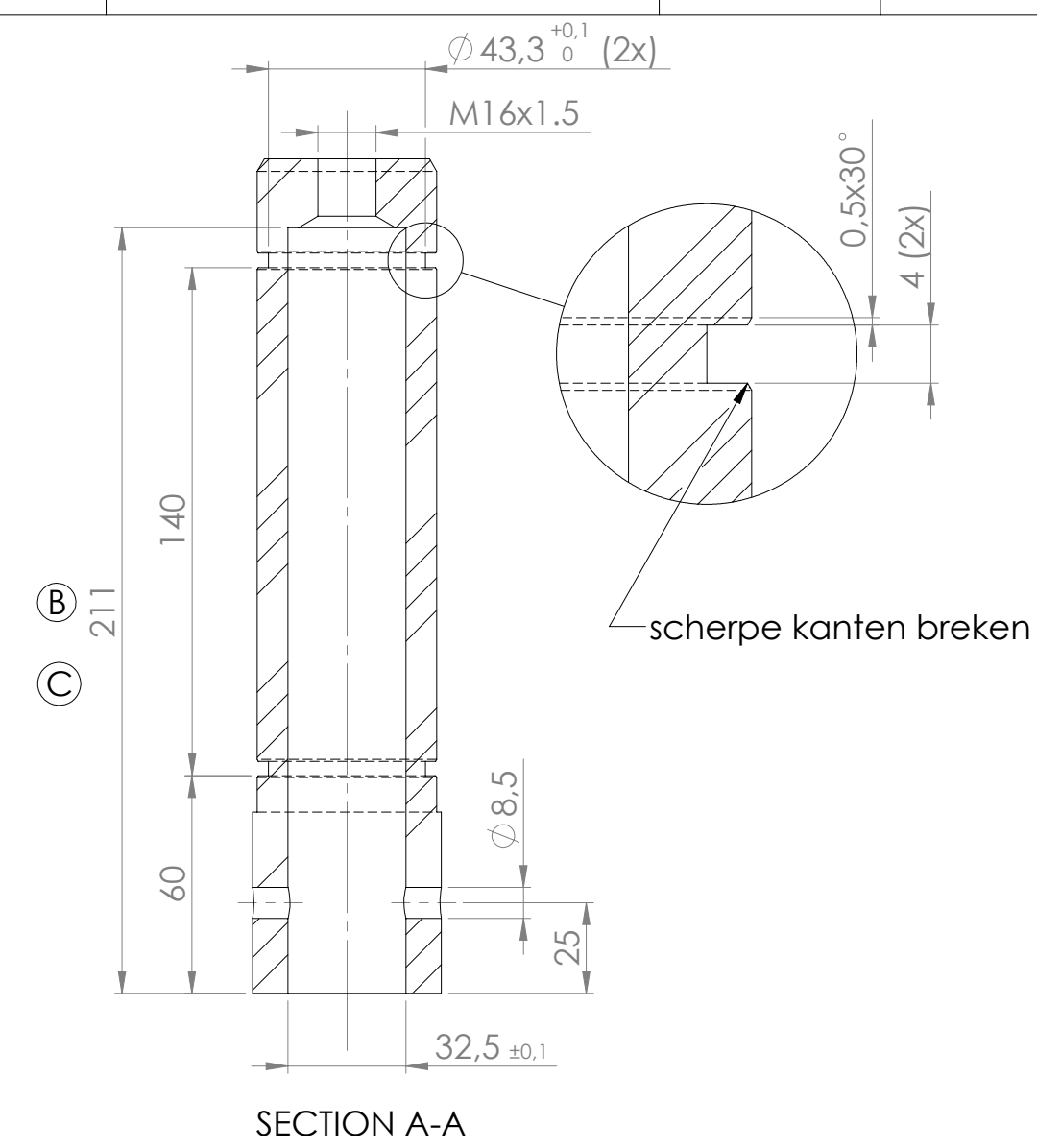
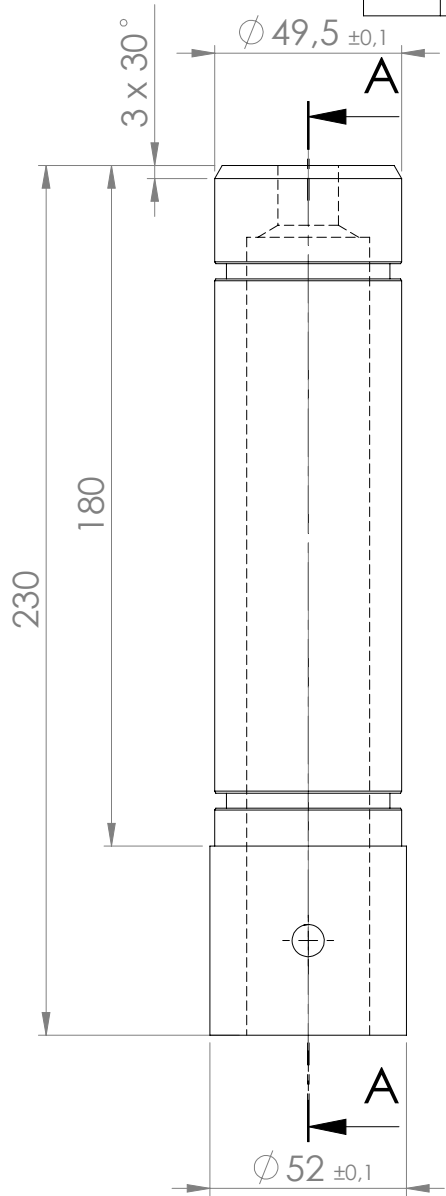
SECTION B-B

8	Buis	1	53 x 1.5 Lengte op maat	Rvs 304L	Noxon
7	Klemring	1	100x50	Kunststof	Intern
6	Flens	1	100x50	Kunststof	Intern
5	Bus	1	52 x80	PTFE	Intern
4	O-ring	3	Inw. 40 x 4	NBR	Eriks
3	Wartel	2	M16	Kunststof	-
2	Pressure Trasmitter	1	Waterpilot FMX167	Rvs	Vega
1	Kunststofbus / Vega uitvoering	1	Zie sheet 4	Delrin	Intern
Pos.No	Onderdeel / Tek.No	Aantal	Afmeting / Type	Materiaal	Leverancier

algemene ruwheid volgens		NEN 3634		toleranties tenzij anders vermeld		A		NEN-ISO 1101		--		--	
R _a in MICRON (µm)		▽		▽		▽		maat ±		hoek ± °		samenstelling	
materiaal				opp. behandeling		warmte behandeling		gewicht gr		algemene ruwheid		aantal	
benaming		Niveau meting Uitvoering type "C"		amerbaanse proj		schaal		1:2		mm		MM	
projectnummer				rev		datum		get		datum		get	
blad 3		van 5		formaat A1									



SECTION B-B
Endres Hauser uitvoering



Vega uitvoering

REVISIONS				
ZONE	REV.	DESCRIPTION	DATE	APPROVED
	B	vega uitvoering langer gemaakt	07-02-2008	GDM
	C	diepte kamer gewijzen van 208 naar 211	16-5-2008	GDM

algemene ruwheid volgens		NEN 3634	toleranties tenzij anders vermeld		A		NEN-ISO 1101		--	--
R _a in MICRON (µm)		✓	▽	▽	maat	±	hoek	±	°	--
materiaal:		gewicht:			gr		algemene ruwheid		✓	
opp behandeling:		warmte behandeling:								
benaming:		amerikaanse proj.								
		schaal								
		1:2								
		eenheid								
		MM								
		rev.								
		datum								
		gez.								
		projectnummer								
		tekeningnummer								
		get.								
		datum								
		blad								
		4								
		van								
		5								
		formaat								
		A3								



WATERSCHAP REGGE
EN DINKEL
WEGTERSWEG 17
7556 BP HENGELO
(074) 246 92 22

**Nivea® fitting
Uitvoering type "B"**

Technical drawing showing the dimensions and installation details for the Nivea® fitting, type "B".

Dimensions and labels:

- Y**: Overall height of the fitting.
- 285**: Distance from the top of the fitting to the center of the mounting bracket.
- 100**: Distance from the center of the mounting bracket to the top of the fitting.
- 100**: Distance from the center of the mounting bracket to the bottom of the fitting.
- 107,5**: Width of the fitting.
- $\phi 12,5 (4x)$** : Diameter of the mounting holes (4 holes).
- X**: Length of the fitting.
- 100**: Distance from the bottom of the fitting to the center of the mounting bracket.
- Put diepte**: Embedment depth (indicated by a vertical line).

The drawing shows the fitting installed in a wall, with the mounting bracket and the fitting body. A side view of the fitting is also shown, indicating the mounting bracket and the fitting body.

algemene ruwheid volgens		NEN 3634		toleranties tenzij anders vermeld		<div> <div>A</div> <div></div> </div> <div> <div></div> <div>A</div> </div>		<div> <div>---</div> <div>---</div> </div>		<div> <div>---</div> <div>---</div> </div>	
R _a in MICRON (µm)		<div>✓</div> <div>▽</div> <div>▽</div>		<div>maat \pm</div> <div>hoek \pm°</div>				samenstellingsnr.		aantal	
materiaal:						<div> <div>gewicht:</div> <div>gr</div> </div>					
opp. behandeling:						<div> <div>warmte behandeling:</div> <div></div> </div>					
benaming:						<div> <div>amerikaanse proj.</div> <div> <div></div> <div></div> </div> </div>					
						<div> <div>schaal</div> <div>1:10</div> </div>					
						<div> <div>eenheid</div> <div>MM</div> </div>					
						<div> <div>rev.</div> <div></div> </div>		<div> <div>datum</div> <div></div> </div>		<div> <div>gez.</div> <div></div> </div>	
<div>  <div> <div>WATERSCHAP REGGE EN DINKEL</div> <div>WEGTERSWEG 17</div> <div>7556 BP HENGELO</div> <div>(074) 246 92 22</div> </div> </div>						<div> <div>projectnummer</div> <div></div> </div>		<div> <div>tekeningnummer</div> <div></div> </div>			
<div> <div>get.</div> <div>datum</div> </div>						<div> <div>get.</div> <div></div> </div>		<div> <div>datum</div> <div></div> </div>			
						<div> <div>blad</div> <div>5</div> </div>		<div> <div>van</div> <div>5</div> </div>		<div> <div>formaat</div> <div>A3</div> </div>	